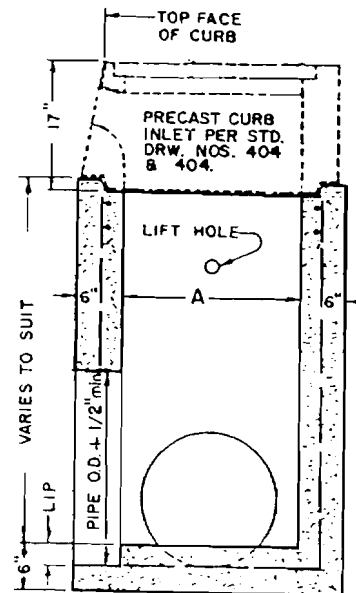


NOTES:

1. OPENINGS SHALL BE CAST AS REQUIRED TO MEET CONNECTING STORM DRAIN PIPING.
2. DEFLECTED OPENINGS MAY BE CHIPPED IN GREEN CONCRETE.
3. CONCRETE SHALL TEST 3000 p.s.i. AT 28 DAYS.
4. BASE SECTIONS OVER 4' IN WALL HEIGHT MAY BE CAST IN TWO PIECES.
5. REFER TO STD. DRWG. NOS. 404 & 406 FOR SETTING DETAILS.
6. APPROVED MANUFACTURER(S):
SANTA ROSA CAST PRODUCTS CO.



SECTION

PRECAST CURB INLET MODEL	BASE SECTION DIMENSIONS				WEIGHT OF BASE COMPONENTS		
	A	B	W	L	WALL PER VERTICAL FT.	6" FLOOR SLAB	CURB INLET & COVER
MODEL 2-1/2A	2'-0"	2'-6"	3'-0"	3'-6"	825 lb	375 lb	700 lb
MODEL 4AC	3'-0"	4'-0"	4'-0"	5'-0"	1200 lb	900 lb	1500 lb

CITY OF UKIAH

**PRECAST BASE SECTION
FOR CURB INLET**

Scale: NO SCALE

Drawn By: ML

Approved By: *R. Radoncelli*

Drawing No.

Date: 3/24/87

Revised:

408