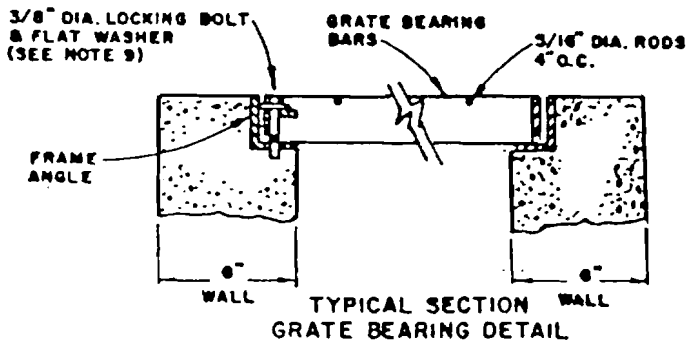


GRATE LOCKING DEVICE
WILL NOT BE SUPPLIED
UNLESS SPECIFIED.



TYPICAL SECTION
GRATE BEARING DETAIL

GRATE

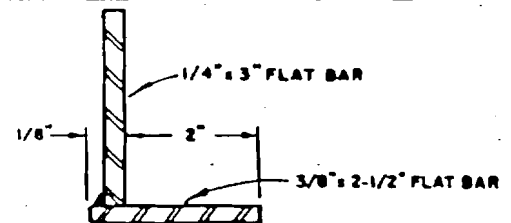
STANDARD GRATE
26 BEARING BARS, 1-1/4" x 3/16"
2 BANDING BARS, 1" x 3/16"

HEAVY GRATE
17 BEARING BARS, 3" x 1/4"
2 BANDING BARS, 2-1/2" x 1/4"

FRAME

STANDARD FRAME
ANGLES, 1-1/2" x 1-1/2" x 3/16"
SIDE BARS, 1-1/2" x 1/4"

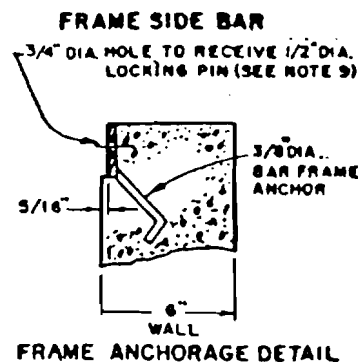
HEAVY FRAME
ANGLES (SEE DETAIL BELOW)
3" x 3/8" SIDE BARS



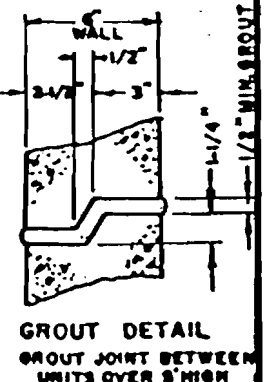
HEAVY GRATE FRAME DETAIL

NOTES:

1. UNITS ARE "TAILOR MADE" TO JOB REQUIREMENTS.
2. OPENINGS SHALL BE CAST AS REQUIRED TO MEET CONNECTING STORM DRAIN PIPING.
3. DEFLECTED OPENINGS MAY BE CHIPPED IN GREEN CONCRETE.
4. REFER TO MANUFACTURERS SPECIFICATIONS FOR DEPTHS OVER 5'-0".
5. CONCRETE SHALL TEST 3000 PSI. AT 28 DAYS.
6. WALLS AND FLOOR SLAB ARE REINFORCED WITH 4" x 4" - 6-6 WELDED WIRE MESH.
7. WALLS AND FLOOR SLAB ARE 6" THICK.
8. METAL FRAME & GRATE SHALL BE GALVANIZED AFTER FABRICATION PER ASTM SPECIFICATION A123.
9. GRATE SHALL BE SECURED TO DROP INLET FRAME WITH ONE 3/8" DIA. UNC PLATED STEEL MACHINE BOLT. OPTIONAL VANDAL PROOFING FEATURE ONLY WHEN SPECIFIED.
10. CLEAR GRATE OPENING IS 5.20 SQ. FT.
11. WEIGHT OF WALLS PER VERTICAL FOOT = 900 LBS.
12. WEIGHT OF FLOOR SLAB = 900 LBS.
13. SANTA ROSA CAST PRODUCTS (OR EQUAL) MODEL 3K



FRAME ANCHORAGE DETAIL



GROUT DETAIL
GROUT JOINT BETWEEN
UNITS OVER 5' HIGH

CITY OF UKIAH

PRECAST CONCRETE

DROP INLET

Scale: NONE Drawn By: SK Approved By: *[Signature]* Drawing No. 412
Date: MAY 1991 Revised: